



Did you know?

This activity plan highlights the importance of sustainably managing our natural resources, focusing on the amount of waste we produce, highlighting the importance of recycling and the impact that inappropriate disposal can have on the environment, communities and the economy.



Natural Resources Wales' purpose is to pursue the sustainable management of natural resources in all of its work. This means looking after air, land, water, wildlife, plants and soil to improve Wales' well-being, and provide a better future for everyone.

Objectives

By the end of this activity learners will be able to:

- Recall facts and figures relating to the impact of littering and fly-tipping.
- Discuss the problem of large amounts of materials being wasted and not reused.
- Discuss solutions to some of the problems raised and make suggestions on what they as individuals can do.

Duration of session

15 minutes

Location

Any

Curriculum area

ESDGC
Geography



Curriculum links

KS2 ESDGC

Consumption and waste

Where the things people consume come from and go to
That waste can cause pollution

KS2 Geography

Study

Living in my world: caring for places and environments
and the importance of being a global citizen

KS3 ESDGC

Consumption and waste

Develop a sense of responsibility for sustainable
development
Appreciate the actions required to reduce their own
ecological footprint and to minimise waste

KS3 Geography

Study

Tomorrow's citizens: issues in Wales and the wider
world of living sustainably and the responsibilities
of being a global citizen

Equipment and resources

- A, B and C markers (could be created by writing on card or written on the floor in chalk)

What to do

Find a suitable location for A, B and C markers
e.g. label 3 trees.

Using the questions below, allow learners to consider
which answer is correct and then stand by the
appropriate letter.

Once the choice is finalised provide the correct
answer and give time to discuss.

1. What is the maximum fine for fly-tipping?
A - £100
B - £5000
C - £50,000 - **correct, and possible imprisonment**
2. What was the cost to the tax payer of clearing up
fly-tipped waste in Wales in 2012/13?
A - £1/2 Million
B - £2 Million - **correct**
C - £5 Million
3. As a percentage how much waste electrical
equipment that is thrown away could be re-used
(this includes mobile phones, laptops etc.)?
A - 10%
B - 25% - **correct, this could be re-used and worth
around £200 million a year**
C - 50%
4. We use around 725,000 plastic bottles a day in
Wales, around how many of these get recycled?
A - 50% - **correct, only half of them get recycled.
It takes 75% less energy to create a plastic bottle
out of recycled material than using raw materials.**
B - 75%
C - 100%

5. In Wales how many double decker buses could we
fill with the food waste we produce in a year?
A - 500
B - 1000
C - 10,000 - **correct, actually its 10,236 (around
220,000 tonnes) and most of this could be eaten.
An average household could save around £700 on
their annual food bill through throwing less away.**
6. How many aluminium cans are recycled in the UK
annually?
A - 350, 000
B - 3.5 Million
C - 3.5 Billion - **correct - if these cans were lined
up next to each other it would be enough to
stretch round the world 10 times!**
7. How long does it take a plastic bag to break down?
A - 1 year
B - 20 years - **correct**
C - 500 years
8. What percentage of the rubbish found in the ocean
is estimated to be plastic?
A - 70%
B - 90% - **correct**
C - 100%

After the game has been played see how much
the group can remember. Pick one or two facts to
discuss in more detail. Think about solutions globally
and locally and things they can do as individuals to
minimise impact or help reduce problems.

Suggested key questions

- How could you reduce the amount of waste you produce?
- What could we do in order to encourage people to recycle more?

Adapting for different needs/abilities

Less able:

- Choose appropriate questions for the group.

More able:

- Get individuals to estimate the answers before giving multiple choice options

Follow up activity/extension

Research where our waste goes.

Research further facts and figures surrounding our waste and create questions and answers to ask the rest of the group.

Produce a campaign to encourage others to reduce, reuse and recycle their waste.

Other waste activities are available, see Activity Plans for:

- *Long lasting litter*
- *Newspaper snippets*
- *Catch a fly-tipper*
- *The 3 C's of littering and fly-tipping*

Additional information

Facts and figures used, as well as additional information can be found at the websites below:

recycleforwales.org.uk

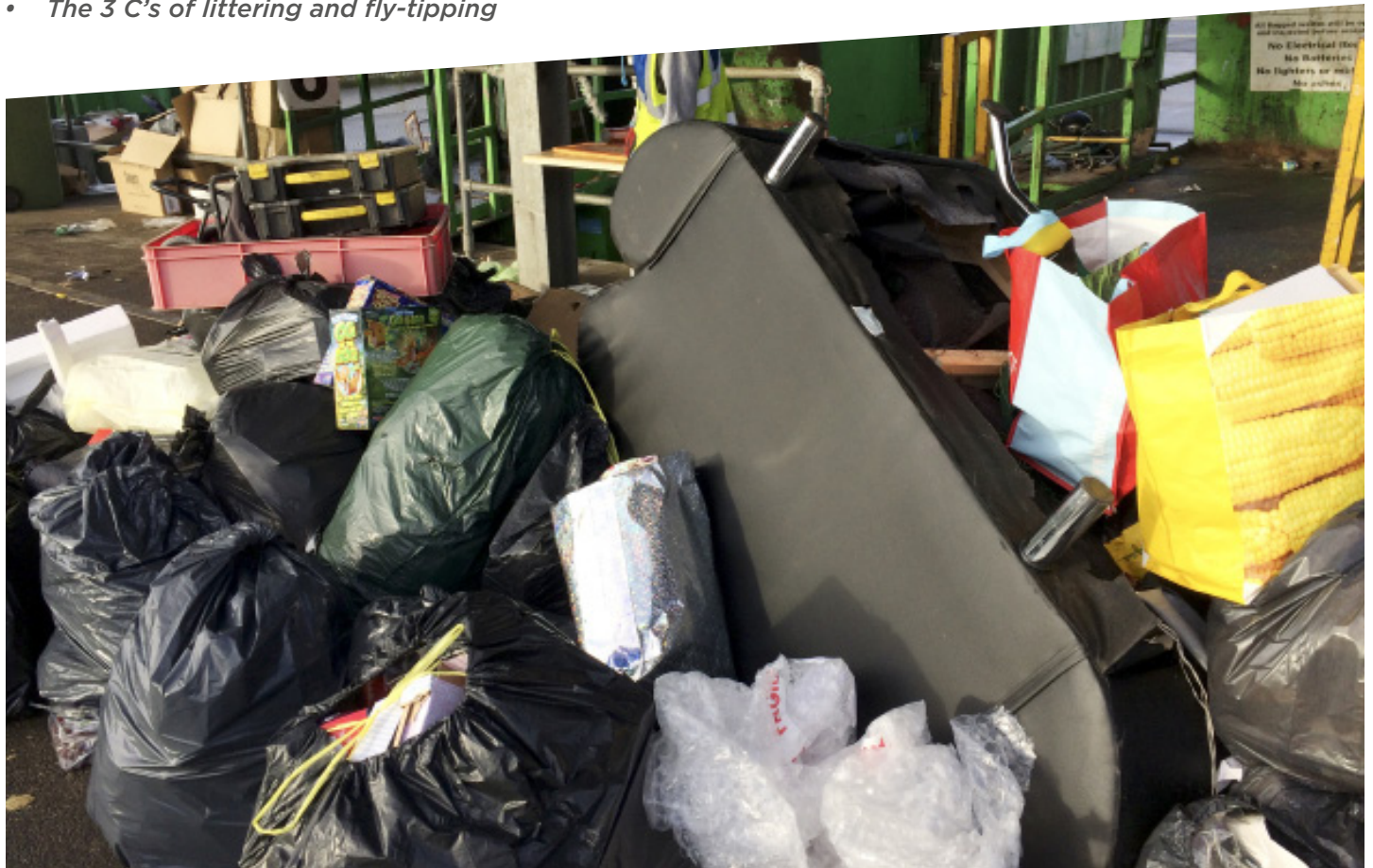
flytippingactionwales.org

wrap.org.uk

recyclenow.com

science.howstuffworks.com/environmental/earth/oceanography/great-pacific-garbage-patch.htm

www.mass.gov/eea/docs/czm/coastsweep/pocket-guide-2003.pdf



Alternative format; large print or another language, please contact:
enquiries@naturalresourceswales.gov.uk
0300 065 3000

www.naturalresources.wales



Mae coetiroedd Llywodraeth Cymru wedi'u hardystio'n unol â rheolau'r Forest Stewardship Council®. Welsh Government woodlands have been certified in accordance with the rules of the Forest Stewardship Council®.



Angraffwyd ar bapur Revive Offset wedi'i ailgylchu 100%.
Printed on Revive offset 100% recycled paper.