

National Access Forum Written Contributions

NAFW 75: 6 July 2023

Introduction

This note is collated and edited by NRW from submissions from Forum members and NRW staff prior to National Access Forum Meetings to facilitate the sharing of information.

Contents

The British Horse Society	2
Cycling UK	12
Ramblers Cymru:	13
Wales Adventure Tourism Organisation:	15
Welsh Government / Wales' Designated Landscapes	16

The British Horse Society/ Y Gymdeithas Ceffylau Prydain Cymru/Wales

Helen Donnan Helen.donnan@bhs.org.uk

General interest

Whether you ride everyday or are just starting out, you can help us protect and restore our riding routes by signing up to our Rideathon Challenge.



BHS Ride Out UK

Ready for a summer challenge that makes a difference?

Join us in our bid to Keep Britain Riding and sign up to our Rideathon Challenge! Ride or carriage drive as many miles as you can throughout July and help us reach our goal of 75,000 miles.

Every penny raised will go towards restoring safe off-road routes for equestrians.

Sign up now 🙌 <https://www.bhs.org.uk/.../our.../ride-out-uk/rideathon/>

#RideathonChallenge is proudly sponsored by Horse & Country TV



The British Horse Society Ride Safe Challenge Award.

A day teaching the mounted police section to safely negotiate the roads of Wales.

Want to do your Ride Safe qualification like South Wales Police mounted unit - ask your local BHS coach <https://www.bhs.org.uk/bhs-in-your-area/wales/>

#BHSCheckAwards #KeepBritainRiding #bhswales



Official Opening of Pentwyn Cynon Multi User Bridge

Huge thanks to A465 Sections 5 and 6 Future Valleys Construction

(NB the surface shown is temporary).

Equestrians Keeping Wales Riding with shared multiuser Access even when infra structure changes.



BHS 'Volunteers Week' Wales

Highlights: Bridget Stein - Champion for the Great Dragon Ride

<https://datamap.gov.wales/.../inspire-wg:Dragon Ride...>

Last year Bridget rode the entire length from Port Talbot to Talacre

BHS - SW Wales Volunteers [BHS SW Wales](#)

Bridget has been an inspiration working with Public rights of way, Land owners and Cyfoeth Naturiol Cymru/Natural Resource Wales.

Llwybr Mawr Morgannwg/The Great Glamorgan Way.

https://greatglamorganway.co.uk/en_gb/

Criss Crossing the five Counties in South Wales a network of bridleways and cycleways.

The British Horse Society has been delighted to be a part of of this project.

All saddles Welcome



Exciting news! Our BHS Access & Rights of Way training has been refreshed, and we're pleased to share with you the opportunity to learn about Access and Rights of Way for equestrians.

Hosted online, each session will focus on specific topics and areas of interest. Our starter session - Introduction to equestrian access & rights of way - teaches the ins and outs of equestrian access that you need to know. From there, you can build on your knowledge with our additional training sessions.

Following our introductory session, we offer training in:

Progressing with equestrian access

Changes to rights of way

Definitive Map Modification Order applications

To discover more about BHS Access training and to book your place, visit:

<http://bhs.org.uk/.../access-and-rights-of-way-training> or email access@bhs.org.uk

The Impact of Active Travel and Cycling and Walking Strategies - a real example



Walkers and cyclists



Equestrians



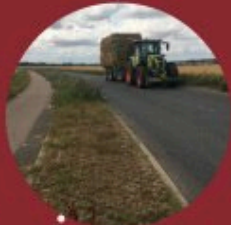
1 Walkers, cyclists and horse riders start together on a bridleway



2 At the end of the bridleway walkers and cyclists can proceed safely on a cycle path, horse riders have to face traffic



3 Walkers and cyclists cross over to another cycle path - horse riders have to continue on the busy road



4 Finally, all can finish the route on another bridleway



Since 2010, we have had over 12,115 road incidents involving horses reported to us, 1,436 horses have been injured, 570 horses have died, 44 humans have lost their lives and 1592 been injured.

Policy and Legislation

Shared equal safe access should be a for all.

Reporting an incident or accident

We urge all riders and carriage drivers to report every incident they are involved in, regardless of severity. This allows us to better understand the rate of equine-related incidents and, ultimately, to use this data to lobby for change in safety laws.

[Record your incident here](#)

DOWNLOAD NEW BHS APP - HORSE i

BHS' new horse incidents reporting app, Horse i, allows you to quickly and easily submit details of any incidents you encounter directly to the BHS via your mobile or tablet device.

Find out more

Read more about the different types of incidents you can report to us, why it is important to submit your incidents and learn how The British Horse Society is working hard to make a difference to equine safety.

The British Horse Society Cymru/Wales were saddened to here the news of two more recent incidences which occurred in Carmarthenshire and Powys. As always they were supported by our Safety team safety@bhs.org.uk

One horse suffered severe injuries when trapped in a cattle grid and fractured its leg along with injuries to the owner /rider. The other incident the horse was hit and died and the owner/driver was spared with injuries. One rider, one carriage driver.

BHS Wales/BHS Cymru Safey work



Ensuring the safety of horses and riders is one of the primary objectives of the BHS, which we work hard to deliver across the UK.

Safety on the roads is a prominent concern that we aim to address through proactive liaison with stakeholders. In Wales specifically, the BHS is:

- Part of the working group for the Road Safety Strategy in Wales, ensuring the rights and safety of horses and riders are considered on a national level.
- Working with the safety teams of all Welsh councils on a Road Safety Signage campaign, signalling other road users to the presence of horses and the need to pass safely.
- Liaising with the Welsh Government, who have backed and are funding our Road Safety Signage campaign.

These are just some of many actions that the BHS has taken and partnerships that we have established to improve safety for all horses, riders and carriage drivers on our roads.

Over the coming weeks, we will be highlighting more of the Safety work that the BHS has been doing across the country, so keep an eye out for more posts!

Ride Out Fund

The BHS Ride Out Fund provides funding for projects that open and restore safe off-road routes for equestrians as well as other users around the UK.

[Donate today](#)

Funding & Resources

With more and more horse and rider road injuries being reported to the BHS every year, it is vital that these routes are preserved for the safety of equestrians.

The more we raise, the more projects we can assist with funding and improve the lives and most importantly, the safety, of all off-road users.



Campaigns and Events

Our BHS Wales National Pleasure Ride in June!

This stunning ride traverses the varying terrain of the extensive Dolaucothi estate, owned and maintained by the National Trust. The route is 10-12 miles of off-road riding, with some short road sections along leafy lanes.

The ride started and ended in the picturesque village of Pumsaint, within the Dolaucothi estate.

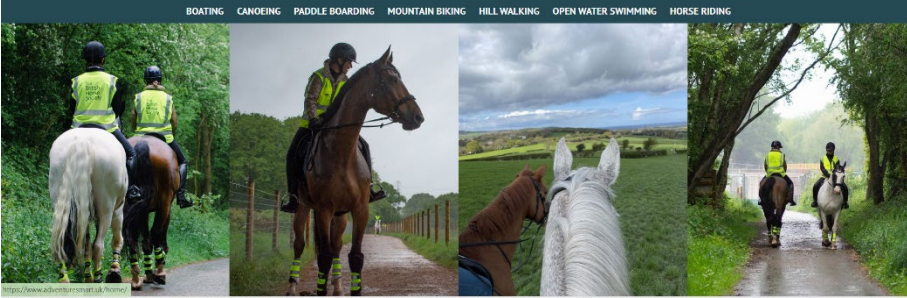
50 riders booked in and raised money to sponsor money to keep a trekking class open for grass root riders at the Royal Welsh Show in July 23.

Be AdventureSmart: When horse riding



WATCH THE WEATHER THINK ABOUT GEAR DEVELOP YOUR SKILLS GETTING HELP DESTINATIONS

BOATING CANOEING PADDLE BOARDING MOUNTAIN BIKING HILL WALKING OPEN WATER SWIMMING HORSE RIDING



BHS has been added to Wales Adventure Smart UK.

Cycling UK

Gwenda Owen, Wales Lead officer Gwenda.owen@cyclingsuk.org

Campaigns and Events

Launch of 'Trails for Wales – we can't afford to wait' during Bike Week

On Wednesday 7 June we launched our report Trails for Wales – We can't afford to wait' (available to download in [Welsh](#) and [English](#)) as a reminder to politicians as to why there was a commitment to access reform in the first place.

The benefits of being outdoors in nature are many and varied. Two of Welsh Government's key motivations for access reform are the health and wellbeing of the people of Wales and the economic benefits to a sustainable tourism economy – both of which remain important today.

We hope to be taking up the deputy minister's invitation for a meeting during which we will expand on the proposal for trials on Welsh Government-owned land submitted by the Outdoor Activity Cross Party Group so that we can evidence the best way of implementing the promised changes.

Traws Eryri – a new trail for north Wales

Over the past two years, we have been working with NRW on a long-distance linear route which broadly parallels the Snowdonia Way walking route from Machynlleth to Conwy. Traws Eryri connects the existing mountain bike trail centres at Coed Y Brenin, Penmachno and Betws-y-Coed/Gwydyr. Its primary focus is to diversify the current offer by appealing more to the gravel cycling and bikepacking market and provide a sustainable multi-day cycle tourism offer within the Eryri National Park.

We've successfully negotiated some new sections of route with landowners but some sections we hoped to use remain off-limits at this time, despite having open-access rights on foot, so at the point of launch there will still be some unresolved issues that would be resolved if, and when, existing government commitments to access reform are brought forwards.

Cycling UK has had significant success in boosting rural tourism opportunities with several similar long-distance routes in England, including King Alfred's Way, and we believe that promoted routes such as this play an important part in creating a culture of responsible access, which would offer important lessons for how to manage and promote access post access reform.

Ramblers Cymru:

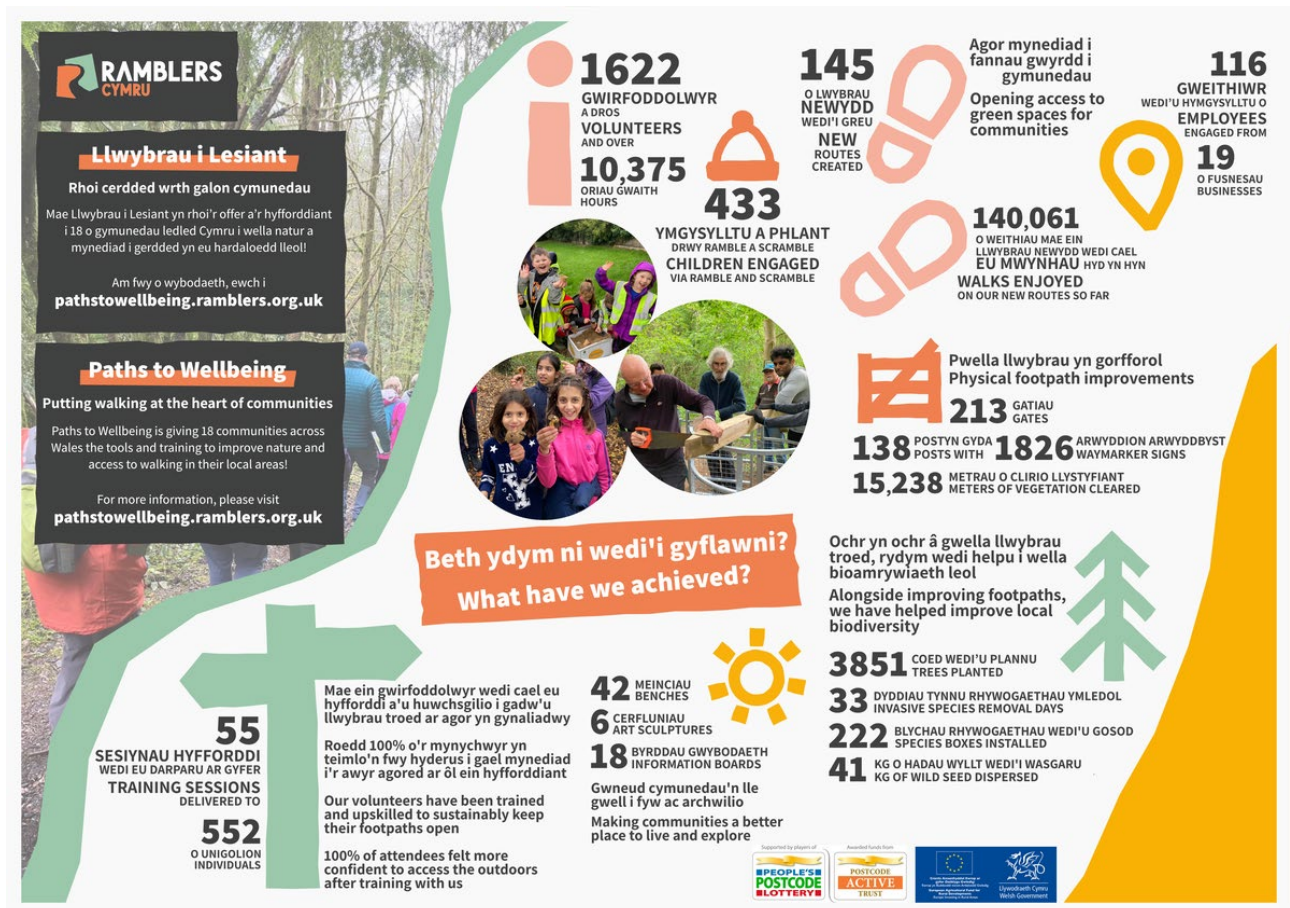
Rebecca Brough Rebecca.Brough@ramblers.org.uk

General interest

Paths to Wellbeing

Our Pan-Wales *Paths to Wellbeing* project is finished at the end of June 2023. It was very successful, exceeding many of its targets and leaving a revitalised network of routes and trained volunteers across Wales. Work is ongoing to build further partnerships to continue this partnership and community driven model across Wales.

All 145 routes can be found on our webpage: <https://pathstowellbeing.ramblers.org.uk/en/>



Cross Party Group for Outdoor Activity Sector in Wales

Ramblers Cymru are providing secretariat (shared with Wales Adventure Tourism Organisation) for the Senedd's Cross Party Group for the Outdoor Activity Sector.

The Group is working to highlight challenges and opportunities affecting the sector, including raising the profile of ongoing issues like access reform, outdoor safety, and the role of the sector in supporting children's education and the new curriculum.

Minutes from previous meeting can be found on the Senedd webpage:

<https://business.senedd.wales/mgOutsideBodyDetails.aspx?ID=779>

Campaigns and Events

Save the Date: Ramblers Cymru event, Cardiff Bay, 8th November 2023

We are in the early stages of planning an event to showcase the importance of access and celebrate the work achieved through our recent projects and partnerships.

Please note the date in your diaries and we will send further information in the coming weeks.

Partnership with Transport for Wales

Our collaboration with Transport for Wales, to connect sustainable transport links with walking opportunities 'Train, talk, walk' has been launched, and the routes are being made available on Transport for Wales' website:

<https://tfw.wales/guided-walks-by-train/ramblers-cymru-station-walks>

The aim is to encourage people to use local train services to access family-friendly walks, starting and finishing at local stations.

Wales Adventure Tourism Organisation:

Paul Renfro paul.renfro@pembrokeshirecoastalforum.org.uk

General interest

Economic and Social Evaluation of the Outdoor Activity Sector in Wales

The Pembrokeshire Coastal Forum recently led research on the Economic and Social Evaluation of the Outdoor Activity Sector in Wales, in partnership with the other members of the Wales Adventure Tourism Organisation (WATO); Snowdonia-Active and the South Wales Outdoor Activity Providers Group. Miller Research was contracted to deliver the research.

The aim of the research was to update the 2014 assessment of the economic impact of the adventure activity sector and to consider the social value of these activities in Wales. WATO wanted to set a baseline of current social and economic value to enable a strategic plan for adventure tourism, which recognises and catalyses the contribution the adventure sector makes to a green recovery in Wales. This work was completed between Feb and March 2023 through the Welsh Government Coastal Capacity Building Challenge Fund.

The data gathering carried out by Miller Research included 606 survey responses across activity participants and outdoor activity providers. Some key highlights from the findings include:

1. Net economic impact of outdoor activity providers: £272.87 Million annually; £205 Million retained in Wales.
2. Net impact of outdoor activity tourism on the Welsh economy: £1.619 Billion annually.
3. Supporting jobs: 31,278; 21% of tourism workforce.
4. A shift in reason for participation with 99% of participants ranked 'seeking support for mental health and a sense of well-being' as important factors, with 94% ranking them as 'extremely' or 'very' important.
5. Mental health value of the outdoor activities sector: £26.54 Million to Wales.
6. A 10% increase in participation in outdoor activities could bring about an increase in social value of £187m spread across physical and mental health, mental wellbeing, individual development, and social capital.

WATO would like to see this 2023 baseline of economic and social value used to work with the adventure activity sector to develop a 5 year strategic plan that enables the support required for businesses to adapt to the changes this report identifies and capitalise on the opportunities to provide a more resilient sector that continues to deliver an important economic and social value to the people of Wales. Continued and improved access for adventurous activity to green and blue spaces throughout Wales will be a key enabler for this process.

The full report, alongside a non-technical executive summary and infographic will be available shortly and can be shared with this group.

Welsh Government / Wales' Designated Landscapes

Shwmae from the Inclusion, Diversity and Governance Excellence Strategic Lead for Wales' Designated Landscapes!



My name is Anna Jones and I am the Inclusion, Diversity and Governance Excellence Strategic Lead across all of Wales' Designated Landscapes - which includes the three Welsh National Park authorities (Pembrokeshire, Bannau and Eryri) and the 5 Areas of Outstanding Natural Beauty (I was appointed by Welsh Government back in September 2022).

I am working in partnership as a catalyst and adviser to encourage more collaborative working opportunities and will be looking internally at governance, policies, recruitment of staff, volunteers and members etc and also externally at the communities and visitors Wales' greenest of spaces currently underserve. Access and barriers to access are something I am incredibly passionate about and would very much like to find out more about the potential to work collaboratively across Wales and support the work of the Forum.

I would also absolutely love to hear any ideas you may have to improve awareness and promote inclusivity and diversity in your Landscapes! So please do just pop me an email annaj@pembrokeshirecoast.org.uk with your suggestions.

END.